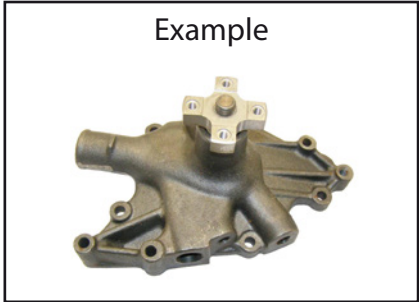


TECHNICAL SHEET

WATER PUMP

Group
04-04-01-00



Customer details

Type machine: Price inquiry
Serial n° machine: Order

CODE: SORT-WTP x TY-WTP x H1 x L1 x D1 x D2 x D3 x Z1 x QTY-FHO x QTY-HO x D4 x D5 x QTY-TA x TA1 x Pm1 x Pi1 x TA2 x Pm2 x Pi2 x C1 x C2 x TA3 x Pm3 x Pi3 x D6 x H2 x QTY-BELT x W2 x D7 x QTY-TEE x TA-FAN x TA4 x Pm4 x Pi4 x RH/LH x GSK x MAT x CO-MO x TY-MO x USED FOR

...

...

...

...

...

...

...

...

...

...

...

...

...

...

...

...

...

...

SORT-WTP..... Sort of water pump:
A = flange
B = pulley
C = toothed pulley
D = gear
E = shaft
S = special

TY-WTP Type of water pump, see types. Only for type A and E.

H1 Total height (mm).

L1 Maximum length (mm).

D1 Shaft diameter (mm).

D2 Neck diameter (mm).

D3 Flange, gear or pulley diameter (mm).

Z1..... Length of the flange, if not round.

QTY-FHO..... Total number of mounting holes (holes + thread).

QTY-HO Number of holes.

D4 Diameter of the biggest mounting hole (mm).

D5 Diameter of the smallest hole (mm).

QTY-TA..... Number of threads.



- ... TA1 Biggest thread.
- ... Pm1..... Metric pitch (mm).
- ... Pi1 Non-metric pitch.
- ... TA2 Smallest thread.
- ... Pm2..... Metric pitch (mm).
- ... Pi2 Non-metric pitch.
- ... C1..... Smallest centre distance of the nearest mounting holes (mm).
- ... C2..... Biggest centre distance of the nearest mounting holes (mm).
- ... TA3 Thread type of the pump shaft.
- ... Pm3..... Metric pitch (mm).
- ... Pi3 Non-metric pitch.
- ... W1 Width of the keyway (mm).
- ... D6 Pulley diameter (mm).
- ... H2 Height of the pulley (mm).
- ... QTY-BELT Number of belt grooves.
- ... W2..... Width of the groove (mm).
- ... D7 Outer diameter of the gear, type C and D (mm).
- ... QTY-TEE..... Number of teeth on the gear, type C and D (mm).
- ... TA-FAN..... Thread of the mounting of the cooling fan present: YES/NO.
- ... TA4 Thread of the mounting of the cooling fan, if present.
- ... Pm4..... Metric pitch (mm).
- ... Pi4 Non-metric pitch.
- ... RH/LH..... Right- or left-handed thread.
- ... GSK Gasket included: YES/NO.
- ... MAT..... Material:
 - AL = aluminium*
 - BR = bronze*
 - CL = cast iron*
 - ALCL = aluminium + cast iron*
- ... CO-MO..... Code of the motor.
- ... TY-MO Type of the motor.
- ... USED FOR..... Used for.



TVH PARTS NV • PARTS & ACCESSORIES DIVISION

Brabantstraat 15 • BE-8790 Waregem • T +32 56 43 42 11 • F +32 56 43 44 88 • parts@tvh.com • www.tvh.com
 rpr kortrijk 0425399042 • btw be 0425.399.042 • bnp paribas fortis 285-0448248-40
 iban be 02.2850.4482.4840 • swift GEBABEBB

SORT

Sort A
Flange



Sort B
Pulley



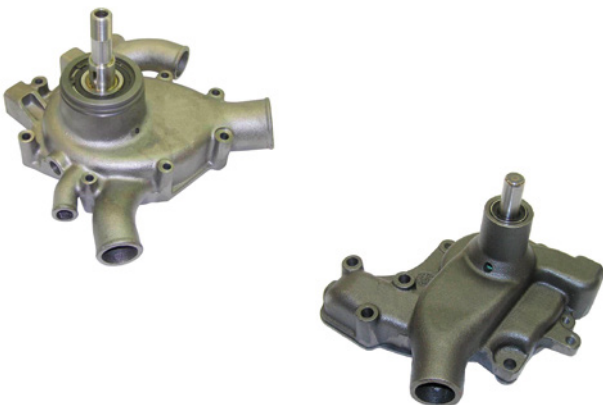
Sort C
Toothed pulley



Sort D
Gear



Sort E
Shaft



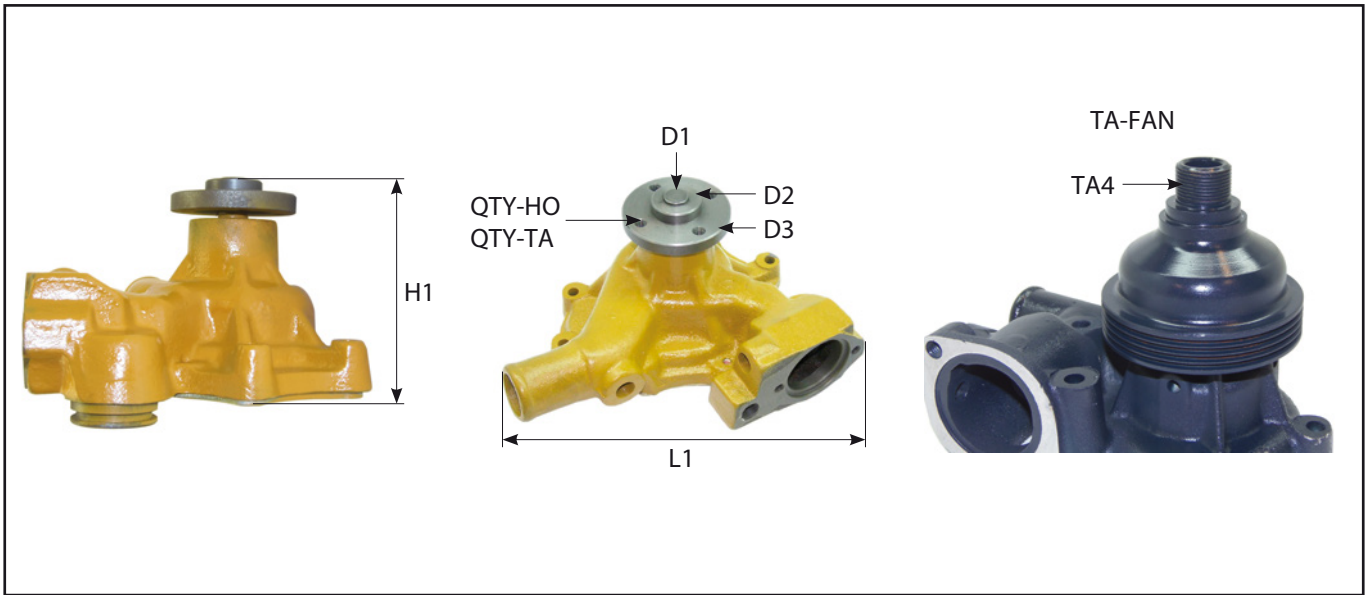
Sort S
Special



TVH PARTS NV • PARTS & ACCESSORIES DIVISION

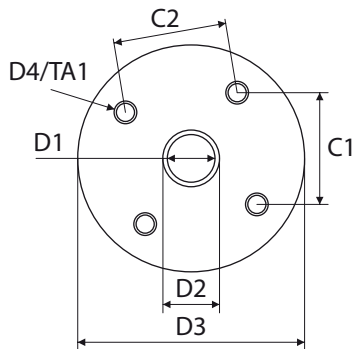
Brabantstraat 15 • BE-8790 Waregem • T +32 56 43 42 11 • F +32 56 43 44 88 • parts@tvh.com • www.tvh.com
rpr kortrijk 0425399042 • btw be 0425.399.042 • bnp paribas fortis 285-0448248-40
iban be 02.2850.4482.4840 • swift GEBABEBB

DIMENSIONS

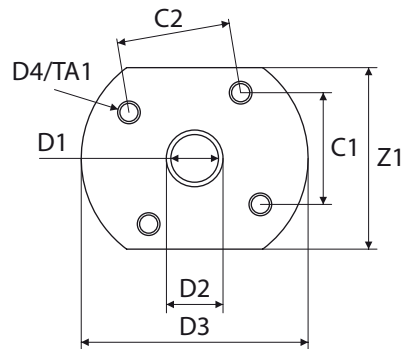


Sort A Flange

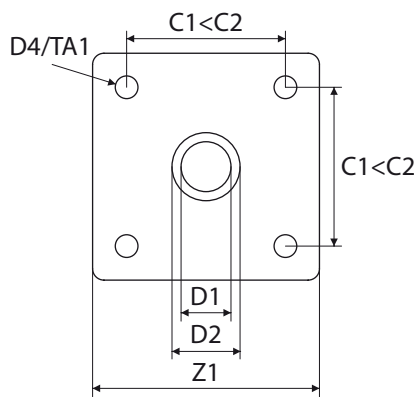
Type A1



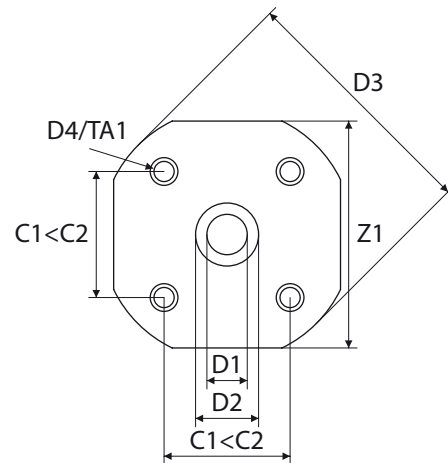
Type A2



Type A3



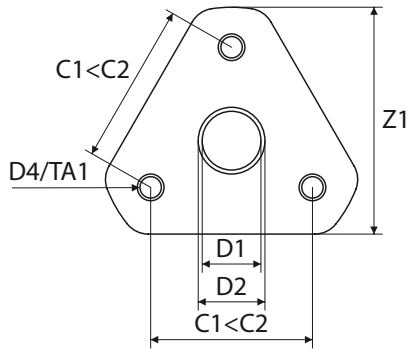
Type A4



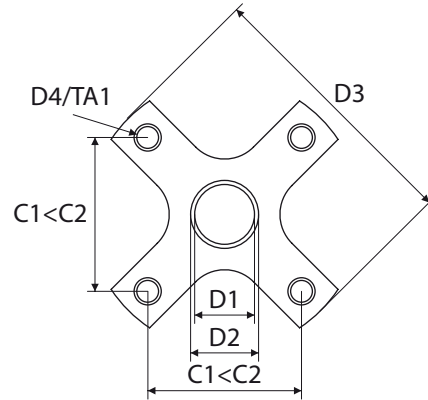
DIMENSIONS

Sort A Flange

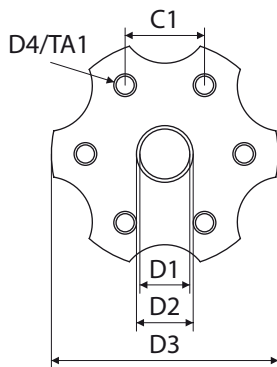
Type A5



Type A6

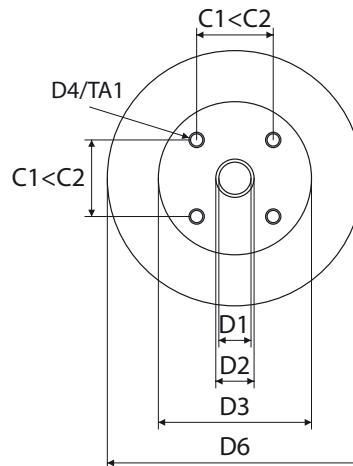
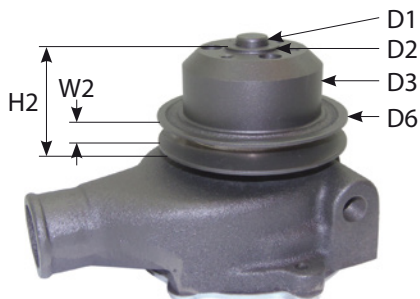


Type A7



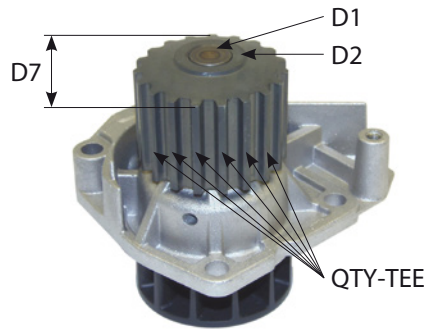
Type A8 Special

Sort B Pulley

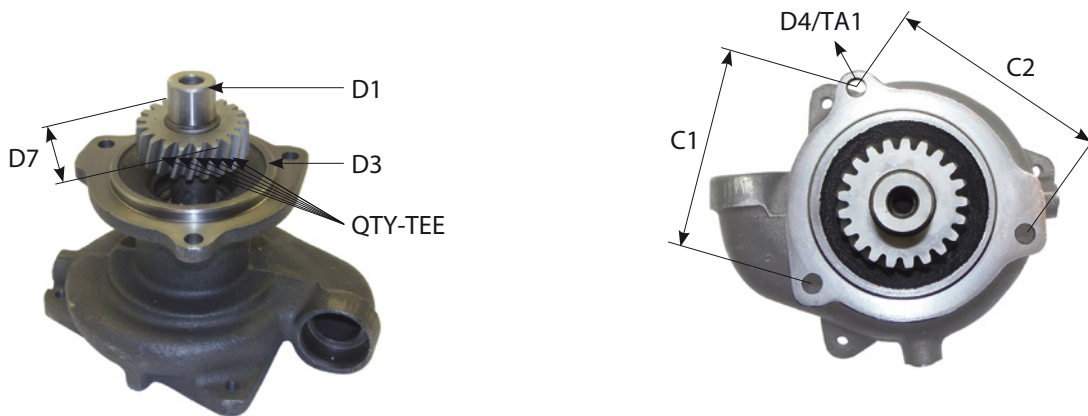


DIMENSIONS

Sort C
Toothed pulley

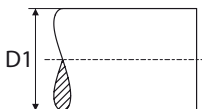


Sort D
Gear

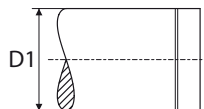


Sort E
Shaft

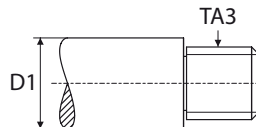
Type E1



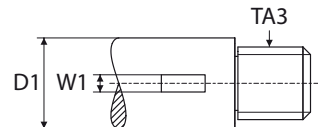
Type E2



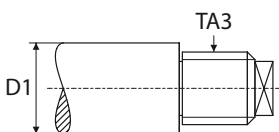
Type E3



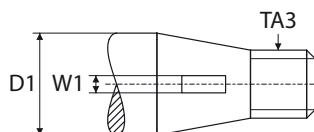
Type E4



Type E5



Type E6



Type E7
Special



TVH PARTS NV • PARTS & ACCESSORIES DIVISION

Brabantstraat 15 • BE-8790 Waregem • T +32 56 43 42 11 • F +32 56 43 44 88 • parts@tvh.com • www.tvh.com
rpr kortrijk 0425399042 • btw be 0425.399.042 • bnp paribas fortis 285-0448248-40
iban be 02.2850.4482.4840 • swift GEBABEBB